

Laser Tool Specialist

2021
Catalogue



Maxiline
ACHIEVING AWESOME RESULTS



Rotary Lasers

GSW 102 / 102G	1
GSW 201 / 201G	2
FRE 208 / 208G	3
201RR / 201GR / 208GR / 208RR	4



Dot & Line Lasers

SG1V1HD / SG3DG2	5
SR4V1H / SR4V4H	6
LP601G / SR4V4HG	7
LR70 / LR70G	8



Dumpy Level

AT32 / ATS32	9
--------------	---

Machine Control

TR360 / TR360G	10
TR361 / TR361G	



Accessories

HDTAGG / LKTAGG / 05HDTAG / 05LKTAGR	
LKTAGGR / LKTAGGG TAG02 / RL	11
SML01 / SML02	12
502BT / 502BS / 9700B	12
ST1 / 158D	13
S20 / S30 / S3680	14
MONOPLE / TRIPOD STAR / TPOLE	15
GJ116 / WB02 / WB03	16
WB01 / WB04 / LDGA	16

GSW102

Self-leveling, Single Axis, Manual Slope, Red Beam



FEATURES

- > Entry level rotary laser level suits home builders, farmers and DIY lovers
- > Simple to use and easy to operate
- > Applications: ceiling installation, concreting, plumbing, fence installation, retaining wall and many more.
- > Remote control operation
- > 400m diameter working range with detector
- > Auto/Manual leveling modes
- > Use rechargeable battery or option of alkaline AA batteries
- > Handy carry case

SPECIFICATION

- > Wavelength: 635nm
- > Working range: up to 400M diameter
- > Laser class: II (<1mw)
- > Auto-levelling range: $\pm 5^\circ$
- > Accuracy: Horizontal ± 1.5 mm/10m
- > Remote range: approx 20m
- > Water/dustproof: IP54
- > Power: Ni-MH rechargeable battery or optional AA battery
- > Working time: up to 10 hours
- > Dimensions: 160(L)x185(W)x120(H)mm
- > Working temperature: $-10^\circ \sim 45^\circ\text{C}$
- > Weight: 1.4 kg



GSW102G

Self-leveling, Single Axis, Manual Slope, Green Beam



FEATURES

- > Entry level rotary laser level suits home builders, farmers and DIY lovers
- > Simple to use and easy to operate
- > Applications: ceiling installation, concreting, plumbing, fence installation, retaining wall and many more.
- > Remote control operation
- > 600m diameter working range with detector
- > Auto/Manual leveling modes
- > Use rechargeable battery or option of alkaline AA batteries
- > Handy carry case

SPECIFICATION

- > Wavelength: 532nm
- > Working range: up to 600M diameter
- > Laser class: II (<1mw)
- > Auto-levelling range: $\pm 5^\circ$
- > Accuracy: Horizontal ± 1.5 mm/10m
- > Remote range: approx 20m
- > Water/dustproof: IP54
- > Power: Ni-MH rechargeable battery or optional AA battery
- > Working time: up to 5 hours
- > Dimensions: 160(L)x185(W)x120(H)mm
- > Working temperature: $0^\circ \sim 45^\circ\text{C}$
- > Weight: 1.4 kg



GSW201

Dual Axis, Manual Slope up to 5%, Red Beam



FEATURES

- > Tough and rugged housing
- > Improved stability and working range
- > Vertical and horizontal levelling, X, Y axis
- > Plumb laser beam
- > Remote control operation
- > 500m diameter working range with detector
- > Auto/manual levelling mode switch
- > Manual grading function
- > Rechargeable battery or option of 4xC battery
- > Strong Plastic Carry Case

SPECIFICATION

- > Wavelength: 635nm
- > Working range: up to 500M diameter
- > Laser class: II (<1mw)
- > Auto-levelling range: $\pm 4^\circ$
- > Accuracy: Horizontal/Vertical $\pm 0.1\text{mm/m}$
- > Remote range: approx 20m
- > Water/dustproof: IP54
- > Power: Ni-MH rechargeable battery or optional C battery
- > Working time: up to 16 hours
- > Dimensions: 220(L)x180(W)x220(H)mm
- > Working temperature: $-10^\circ \sim 45^\circ\text{C}$
- > Weight: 2.2kg



Dual grade red beam rotary laser level, self leveling in both horizontal and vertical position. Side mounting support enables vertical partition straight on the floor.



GSW201G

Dual Axis, Manual Slope up to 5%, Green Beam



FEATURES

- > Tough and rugged housing
- > Improved stability and working range
- > Vertical and horizontal levelling, X, Y axis
- > Plumb laser beam
- > Remote control operation
- > 800m diameter working range with detector
- > Auto/manual levelling mode switch
- > Manual grading function
- > Rechargeable battery or option of 4xC battery
- > Strong Plastic Carry Case

SPECIFICATION

- > Wavelength: 532nm
- > Working range: up to 800M diameter
- > Laser class: II (<1mw)
- > Auto-levelling range: $\pm 4^\circ$
- > Accuracy: Horizontal/Vertical $\pm 0.1\text{mm/m}$
- > Remote range: approx 20m
- > Water/dustproof: IP54
- > Power: Ni-MH rechargeable battery or optional C battery
- > Working time: up to 8 hours
- > Dimensions: 220(L)x180(W)x220(H)mm
- > Working temperature: $0^\circ \sim 40^\circ\text{C}$
- > Weight: 2.2kg



Dual grade Green Beam rotary laser level, self leveling in both horizontal and vertical. Laser level is calibrated before shipping.



FRE208

Digital Dual Grade, Easy to Operate, Red Beam



FEATURES

- > Dual grade laser in single or dual grading (X & Y axis)
- > $\pm 10.0\%$ slope range
- > Digital input
- > Bump alert
- > Plumb up and down beams
- > Remote control with digital LCD display
- > Rechargeable NI-MH battery included with option to use normal alkaline C battery
- > 500m diameter working range with supplied receiver
- > Rubber housing and quality carry case

SPECIFICATION

- > Rubber housing and quality carry case
- > Wavelength: 635nm
- > Slope (Grade) range: $\pm 10.0\%$ (1 in 10)
- > Working range: up to 500M diameter with supplied receiver
- > Laser class: II (<1mw)
- > Auto-leveling range: IP54
- > Accuracy: $\pm 3\text{mm}$ @ 30 metres
- > Water/dustproof: IP54
- > Power: 2 x Ni-MH rechargeable batteries (included) or alkaline C battery(not included)
- > Working time: up to 40 hours
- > Dimensions: 160x160x185mm
- > Weight: 3.0kg



Great for earthworks, concreting, landscaping, roofing and etc. Simply enter the exact % needed, FRE208 would do the slope for you. After all, efficiency means time and money savings.



FRE208G

Digital Dual Grade, Easy to Operate, Green Beam



FEATURES

- > Dual grade laser in single or dual grading (X & Y axis)
- > $\pm 10.0\%$ slope range
- > Digital input
- > Bump alert
- > Plumb up and down beams
- > Remote control with digital LCD display
- > Rechargeable NI-MH battery included with option to use normal alkaline C battery
- > 800m diameter working range with supplied receiver
- > Rubber housing and quality carry case

SPECIFICATION

- > Wavelength: 532nm
- > Slope (Grade) range: $\pm 10.0\%$ (1 in 10)
- > Working range: up to 800M diameter with supplied receiver
- > Laser class: II (<1mw)
- > Auto-leveling range: IP54
- > Accuracy: $\pm 3\text{mm}$ @ 30 metres
- > Water/dustproof: IP54
- > Power: 2 x Ni-MH rechargeable batteries (included) or alkaline C battery(not included)
- > Working time: up to 20 hours
- > Dimensions: 160x160x185mm
- > Weight: 3.0kg



Green beam gives a working range of up to 800m diameter. Great for earthworks, concreting, landscaping, roofing and etc. Simply enter the exact % needed, FRE208G would do the slope for you.



201RR

Basic, Affordable, Red Beam



FEATURES

- > LCD displays on both the front and back of the receiver
- > Back light
- > Audio indication: loud, soft, off
- > Accuracy indication: fine, coarse

SPECIFICATION

- > Working range: up to 200m (Radius)
- > Accuracy: Fine: $\pm 1\text{mm}$ Coarse: $\pm 5\text{mm}$
- > Working environment: Indoor/outdoor
- > Water/Dust: IP43
- > Power supply: 19V battery



201GR

Basic, Affordable, Green Beam



FEATURES

- > LCD displays on both the front and back of the receiver
- > Back light
- > Audio indication: loud, soft, off
- > Accuracy indication: fine, coarse

SPECIFICATION

- > Working range: up to 200m (Radius)
- > Accuracy: Fine: $\pm 1\text{mm}$ Coarse: $\pm 5\text{mm}$
- > Working environment: Indoor/outdoor
- > Water/Dust: IP43
- > Power supply: 19V battery



208RR

Rugged, Bright Colored, Red Beam



FEATURES

- > 208RR nearly compatible with all red beam rotary laser level on the market: Spectra, Topcon, Leica Fukuda CPI and etc.
- > Clear LCD display on both sides
- > Bubble vial for enhanced accuracy
- > Rugged rubber protected body
- > Back light display
- > Top mounted magnet
- > Audio and visual indication
- > Low battery warning on LCD
- > Auto switch off at 10 minutes

SPECIFICATION

- > Detecting accuracy: fine $\pm 1\text{mm}$ coarse $\pm 2\text{mm}$
- > Working environment: Indoor/outdoor
- > Power supply: 1 9V battery included
- > Pick up window size: 47mm

208GR

Rugged, Bright Colored, Green Beam



FEATURES

- > 208GR nearly compatible with all green beam rotary laser level on the market: Spectra, Topcon, Leica Fukuda CPI and etc.
- > Clear LCD display on both sides
- > Bubble vial for enhanced accuracy
- > Rugged rubber protected body
- > Back light display
- > Top mounted magnet
- > Audio and visual indication
- > Low battery warning on LCD
- > Auto switch off at 10 minutes

SPECIFICATION

- > Detecting accuracy: fine $\pm 1\text{mm}$ coarse $\pm 2\text{mm}$
- > Working environment: Indoor/outdoor
- > Power supply: 19V battery included
- > Pick up window size: 47mm

SG1V1HD

Superior Visibility, Plumb Dots, Touch Screen Panel, Rechargeable Battery



FEATURES

- > 2 cross lines (top and front) and plumb dots
- > Pendulum lock for reference check and transport protection
- > Superior green beam visibility
- > Pulse mode ready
- > Option to use 4 AA batteries or rechargeable battery
- > Magnetic wall bracket included
- > Thread: 1/4" and 5/8"
- > Rugged rubber housing

SPECIFICATION

- > Wavelength: vertical * horizontal 532nm
- > Working range: indoor visible up to 15m or 60m with optional receiver
- > Laser class: II (<1mw) > Thread: 1/4" and 5/8"
- > Self-levelling range: $\pm 3^\circ$ > H/V Accuracy: $\pm 1\text{mm}/5\text{m}$
- > Working environment: Indoor/outdoor with receiver
- > Power: Rechargeable battery or 4 AA batteries
- > Laser weight: 0.7kg



SG3DG2

Superior Visibility, 3 x 360°, Touch Screen Panel, Rechargeable Battery



FEATURES

- > 1 vertical and 2 horizontal 360° laser beams
- > Green beam provides superior visibility
- > Pulse mode ready
- > Option to use 4 AA batteries or lithium battery
- > Magnetic wall bracket included
- > Thread: 1/4" and 5/8"
- > Rugged rubber housing

SPECIFICATION

- > Wavelength: vertical * horizontal 532nm
- > Working range: indoor visible up to 15m or 50m with optional receiver
- > Laser class: II (<1mw) > Thread: 1/4" and 5/8"
- > Self-levelling range: $\pm 3^\circ$ > H/V Accuracy: $\pm 1\text{mm}/5\text{m}$
- > Working environment: Indoor/outdoor with receiver
- > Power: Li-ion rechargeable battery (up to 8h) or 4 AA batteries (up to 4h)
- > Laser weight: 0.7kg



SR4V1H

Affordable, Reliable, Pulse Ready



FEATURES

- > Good for all types of indoor and outdoor fit out jobs: tilting, room partition, window installation, shop fitting, cabinet installation, decorating, electrical installation and etc, which would suit tradesperson and builders.
- > With the tough housing and high accuracy, it can be used for outdoor with a range up to 50m with optional detector, great for all the indoor and outdoor works.
- > 360° turnable base is easy for switching
- > Now the extra 5 dots on the beams make alignment easier and improve the accuracy

SPECIFICATION

- > Wavelength: vertical*horizontal 635nm; down plummet 650nm
- > Working range: up to 7m or 50m with optional detector (in diameter)
- > Laser class: II (<1mw)
- > H/V accuracy: $\pm 1\text{mm}/5\text{m}$
- > Working environment: Indoor/outdoor with optional detector
- > Thread: 5/8"
- > Power: 3 x AA (testing batteries included)
- > Dimensions: 92mmx180mm
- > Working temperature: $-10^{\circ} - + 50^{\circ}$
- > Weight: 2kg



SR4V4H

Versatile, Reliable, Pulse Ready



FEATURES

- > All you need for indoor jobs, covers wide range of applications: tilting, room partition, window installation, shop fitting, cabinet installation, decorating, electrical installation and etc.
- > With the tough housing and high accuracy, it can be used for indoor/outdoor with a range up to 50m with optional detector, budget indoor replacement for rotary laser.
- > 360° turnable base is easy for switching.

SPECIFICATION

- > Wavelength: vertical*horizontal 635nm; down plummet 650nm
- > Working range: up to 10m or 50m with optional detector (in diameter)
- > Laser class: II (<1mw)
- > H/V accuracy: $\pm 1\text{mm}/5\text{m}$
- > Working environment: Indoor/outdoor with optional detector
- > Thread: 5/8"
- > Power: 4 x AA (testing batteries included)
- > Dimensions: 126mmx200mm
- > Working temperature: $-10^{\circ} - + 50^{\circ}$
- > Weight: 104kg



LP601G

Superior Visibility, 360° Turnable Base, Plumb Dots, Rechargeable Battery



FEATURES

- > Superior bright green beam ensures better visibility
- > Vertical reference dots make alignment jobs easy and accurate
- > Pendulum lock makes manual reference check quick and easy
- > Indoor/outdoor use (outdoor use with optional detector)
- > Applications: ceiling, lights installation, partition, window installation, diagonal lines for stair installation and many more
- > Choice of rechargeable battery or alkaline AA batteries
- > Thread: 1/4" and 5/8"
- > Padded carry case

SPECIFICATION

- > Wavelength: vertical * horizontal 515nm down plummet 650nm
- > Working range: up to 50m with optional detector
- > Laser Power: <1mw > Power: Lithium battery
- > H/V accuracy: ±1mm/5m > Dimensions: 75mmx120mm
- > Working environment: Indoor/outdoor with optional detector
- > Working hours: approx 3 hours (all beams) per charge
- > Working temperature: 0° – + 40°
- > Weight: 0.9kg



SR4V4HG

Superior Visibility, 360° Turnable Base, Versatile Applications, Rechargeable Battery



SPECIFICATION

- > Wavelength: vertical*horizontal 515nm; down plummet 650nm
- > Working range: up to 50m with detector
- > Laser class: II (<1mw) > Thread: 5/8"
- > H/V accuracy: ±1mm/5 > Power: Lithium battery
- > Working environment: Indoor/outdoor with detector
- > Dimensions: 126mmx200mm
- > Working temperature: 0° – + 40°
- > Working hours: approx 4~6 hours (with 2 batteries)

- > High powered 4V4H 8 green beams laser level, indoor is visible even in 30 meters range. With included detector, extend working range up to 50 meters for both indoor and outdoor use.

COMPLETE KIT

- > Laser unit, detector, 2 x lithium batteries, charger, glasses, user manual, carry case



LR70



Audio Signal, Front and Back Display, For Red Beam



FEATURES

- > Be compatible with our red beam cross line laser levels;
- > Can be your main or backup cross line laser receiver;
- > Has horizontal and vertical vials for better measurement;

SPECIFICATION

- > Detecting wavelength: $635\text{nm} \pm 5\text{nm}$
- > Working range: up to 25M radius (laser level range dependent)
- > Power: 1 x 9v battery (included)

COMPLETE KIT

- > Receiver, bracket, battery



LR70G



Audio Signal, Front and Back Display, For Green Beam



FEATURES

- > Be compatible with our red beam cross line laser levels;
- > Can be your main or backup cross line laser receiver;
- > Has horizontal and vertical vials for better measurement;

SPECIFICATION

- > Detecting wavelength: $532\text{nm} \pm 5\text{nm}$
- > Working range: up to 25M radius (laser level range dependent)
- > Power: 1 x 9v battery (included)

COMPLETE KIT

- > Receiver, bracket, battery



AT32

32 X Magnification Magnet Damper



FEATURES

- > New to our dumpy level range, this AT32 dumpy level has a beautiful design. It would meet you wherever in a building and construction site or on a farm field.

COMPLETE KIT

- > Dumpy level, carry case, plumb bob

SPECIFICATION

- > Standard Deviation for 1km double run leveling: 1.5mm
- > Image: Positive image
- > Magnification: 32X
- > Objective aperture: 36mm
- > Minimum focus: 0.4m
- > Stadio ration: 1:100
- > Setting accuracy: ± 0.3
- > Magnetically dampened compensator: $\pm 15'$
- > Sensitivity of bubble: 8' per 2mm
- > Tripod thread: 5/8"
- > Unit Weight: 1.15kg



ATS32

32 X Magnification Air Damper



FEATURES

- > New to our dumpy level range, this ATS32 dumpy level has inbuilt air damper system which is widely used in the surveying industry.
- > Bright and clear optics
- > Quick and easy measurement
- > Left and right slow motion screws
- > Local service centre in Clayton Vic 3168 ensure you with peace of mind
- > All purchases come with an Australian tax invoice

COMPLETE KIT

- > Dumpy level, carry case, plumb bob

SPECIFICATION

- > Standard Deviation for 1km double run leveling: 1.5mm
- > Image: Positive image
- > Magnification: 32X
- > Objective aperture: 36mm
- > Minimum focus: 0.4m
- > Stadio ration: 1:100
- > Setting accuracy: ± 0.3
- > Magnetically dampened compensator: $\pm 15'$
- > Sensitivity of bubble: 8' per 2mm
- > Tripod thread: 5/8"
- > Unit Weight: 1.15kg



TR360

Clamp Attachment Red Beam



FEATURES

- > This machine control laser detector is a useful tool for all the earth moving machines. With clamp, the detector can be mounted on graders, backhoes, bobcats, excavators and etc, save your time and effort. Simply to operate and detect.

COMPLETE KIT

- > 1 main receiver, 1 cab display repeater, 1 charger, 2 connection cables, 1 user manual, 1 padded carry case

SPECIFICATION

- > Fine Accuracy : $\pm 2\text{mm} \sim \pm 10\text{mm}$
- > Coarse Accuracy: $\pm 5\text{mm} \sim \pm 25\text{mm}$
- > Mounting: Clamp > Power: Ni-Mh Rechargeable
- > Working range: up to 300m (depends on the working range of your rotary laser level)
- > Working Temperature: $-20^{\circ}\text{C} \sim +50^{\circ}\text{C}$
- > Dimensions: 376x180x49mm
- > Weight: approx 9kg

TR360G

Clamp Attachment Green Beam



FEATURES

- > Green beam machine control laser detector, which is a useful tool for all the earth moving machines. With clamp, the detector can be mounted on graders, backhoes, bobcats, excavators and etc, save your time and effort. Simply to operate and detect.

COMPLETE KIT

- > 1 main receiver, 1 cab display repeater, 1 charger, 2 connection cables, 1 user manual, 1 padded carry case

SPECIFICATION

- > Fine Accuracy : $\pm 2\text{mm} \sim \pm 10\text{mm}$
- > Coarse Accuracy: $\pm 5\text{mm} \sim \pm 25\text{mm}$
- > Mounting: Clamp > Power: Ni-Mh Rechargeable
- > Working range: up to 300m (depends on the working range of your rotary laser level)
- > Working Temperature: $-20^{\circ}\text{C} \sim +50^{\circ}\text{C}$
- > Dimensions: 376x180x49mm
- > Weight: approx 9kg

TR361

Magnet Attachment Red Beam



FEATURES

- > This machine control laser detector is a useful tool for all the earth moving machines. With magnet, the detector can be mounted on graders, backhoes, bobcats, excavators and etc, save your time and effort. Simple to operate and detect.

COMPLETE KIT

- > 1 main receiver, 1 cab display repeater, 1 charger, 2 connection cables, 1 user manual, 1 padded carry case

SPECIFICATION

- > Fine Accuracy : $\pm 2\text{mm} \sim \pm 10\text{mm}$
- > Coarse Accuracy: $\pm 5\text{mm} \sim \pm 25\text{mm}$
- > Mounting: Magnetic > Power: Ni-Mh Rechargeable
- > Working range: up to 300m (depends on the real working range of your rotary laser level)
- > Working Temperature: $-20^{\circ}\text{C} \sim +50^{\circ}\text{C}$
- > Dimensions: 376x180x49mm
- > Weight: approx 9kg

TR361G

Magnet Attachment Green Beam



FEATURES

- > Green beam machine control laser detector, to work with green beam rotary laser level. It is a useful tool for all the earth moving machines. With magnet, the detector can be mounted on graders, backhoes, bobcats, excavators and etc, save your time and effort. Simple to operate and detect.

COMPLETE KIT

- > 1 main receiver, 1 cab display repeater, 1 charger, 2 connection cables, 1 user manual, 1 padded carry case

SPECIFICATION

- > Fine Accuracy : $\pm 2\text{mm} \sim \pm 10\text{mm}$
- > Coarse Accuracy: $\pm 5\text{mm} \sim \pm 25\text{mm}$
- > Mounting: Magnetic > Power: Ni-Mh Rechargeable
- > Working range: up to 300m (depends on the real working range of your rotary laser level)
- > Working Temperature: $-20^{\circ}\text{C} \sim +50^{\circ}\text{C}$
- > Dimensions: 376x180x49mm
- > Weight: approx 9kg

LASER LEVEL ACCESSORIES

TARGET/GLASSES

HDTAGG Green Magnetic Target



FEATURES

- > Green laser target plate with top magnet and rear support, improves working range and visibility for your lasers.

To be used with:

- > Green beam rotary Lasers
- > Green cross Line laser

SPECIFICATION

- > Target dimension: 74mm (W) x 104mm (H)

05HDTAG Red Magnetic Target



FEATURES

- > Red laser target plate with top magnet and rear support, improves working range and visibility for your lasers.

To be used with:

- > Rotary Lasers
- > Cross Line laser
- > Laser distance measure/ laser range finder

SPECIFICATION

- > Target dimension: 74mm (W) x 104mm (H)

05LKTAGR Magnetic Red Target



FEATURES

- > Red laser target plate with top magnetic, improves working range and visibility for your lasers.

To be used with:

- > Rotary Lasers
- > Cross Line laser

SPECIFICATION

- > Target dimension: 70mm (W) x 100mm (H)

LKTAGG Magnetic GREEN Target



FEATURES

- > Green laser target plate with top magnetic, improves working range and visibility for your lasers.

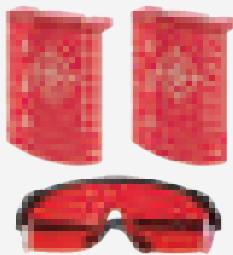
To be used with:

- > Rotary Lasers
- > Cross Line laser

SPECIFICATION

- > Target dimension: 70mm (W) x 100mm (H)

LKTAGGR Red Beam Laser Glasses



FEATURES

- > Red laser target plate with top magnetic, improves working range and visibility for your lasers.
- > Red laser glasses, improve the visibility of laser beams. Would not improve for outdoor jobs. You can wear the glasses over your normal glasses.

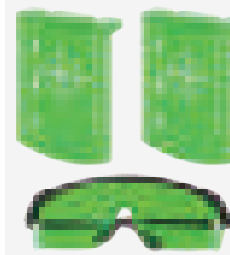
To be used with:

- > Rotary Lasers
- > Cross Line laser

SPECIFICATION

- > Target dimension: 70mm (W) x 100mm (H)

LKTAGGG Green Beam Laser Glasses



FEATURES

- > Green laser target plate with top magnetic, improves working range and visibility for your lasers.
- > Green laser glasses, improve the visibility of laser beams. Would not improve for outdoor jobs. You can wear the glasses over your normal glasses.

To be used with:

- > Rotary Lasers
- > Cross Line laser

SPECIFICATION

- > Target dimension: 70mm (W) x 100mm (H)

SURVEY ACCESSORIES

TAG02/RL

Adjustable Aluminium Rod Level



FEATURES

- > Die-cast aluminum body
- > Adjustable vial
- > Fits round or rectangular rods

SPECIFICATION

- > Material: Aluminum
- > Weight: 90g

COMPLETE KIT

- > Vial

Tilting Reflector with Crosshairs



FEATURES

- > Widely used for high precision measurement such as land & housing surveying and mapping, road/railway/building infrastructure construction and etc.

- > Diamond pattern reflector with printed crosshairs
- > 145mm height
- > Quick release adapter
- > Mount with swiss-style male tip or quick release adapters

SPECIFICATION

- > Dimensions: 850mmx1450mm
- > Weight: 120g

SML01 Laser & Camera Tripod



FEATURES

- > This aluminum laser tripod, with quick release clamps, are suitable for use with cross line lasers, dot laser, laser distance meter as well as camera and camcorder.

COMPLETE KIT

- > 1 laser tripod, 1 carry bag

SPECIFICATION

- > Max Height: approx 40cm
- > Min Height: approx 23cm
- > Material: aluminium
- > Thread: 1/4"
- > Tripod Weight: 0.48kg
- > Max Load Capacity: 2kg

SML02 Laser & Camera Tripod



FEATURES

- > Idea for Cross Line Laser, Laser Distance Measurer, Camera, DSLR, Camcorder
- > This aluminum laser tripod, with quick release clamps, are suitable for use with cross line lasers, dot laser, laser distance meter as well as camera and camcorder.
- > It comes with 1/4" camera thread and 5/8" surveying thread.

COMPLETE KIT

- > 1 laser tripod, 1 carry bag

SPECIFICATION

- > Max Height: approx 33cm (1/4" thread) or 25cm (5/8" thread)
- > Min Height: approx 23cm (1/4" thread) or 15cm (5/8" thread)
- > Material: aluminium
- > Thread: 1/4" and 5/8"
- > Tripod Weight: 0.48kg
- > Max Load Capacity: 2kg

502BT 5/8" Thread Laser Tripod



FEATURES

- > Quality aluminium laser tripod with 5/8" thread, good for indoor use.

COMPLETE KIT

- > tripod, carry bag

SPECIFICATION

- > Max Height: 145cm
- > Min Height: 52cm
- > Stretch Range: 29cm
- > Material: aluminum
- > Thread: 5/8"
- > Tripod Weight: 1.3kg
- > Max Load Capacity: 5kg

502BS 1/4" & 5/8" Thread Laser Tripod



FEATURES

- > Quick release clamps, would be suitable for use with lasers and dumpy levels.
- > 2 converters: standard survey 5/8" thread and 1/4" camera thread.
- > Great for indoor use

COMPLETE KIT

- > tripod, carry bag

SPECIFICATION

- > Max Height: 148cm
- > Min Height: 53cm
- > Stretch Range: 29cm
- > Material: aluminum
- > Thread: 1/4" & 5/8"
- > Tripod Weight: 1.9kg
- > Max Load Capacity: 5kg

9700B 1.66M 5/8" Thread Laser Tripod



FEATURES

- > Great for indoor use for Cross line laser levels and dumpy levels

COMPLETE KIT

- > tripod, carry bag

SPECIFICATION

- > Max Height: 166cm
- > Min Height: 60cm
- > Stretch Range: 29cm
- > Material: aluminum
- > Thread: 5/8"
- > Tripod Weight: 1.9kg
- > Max Load Capacity: 5kg

ST1

Economic Construction for Many Applications

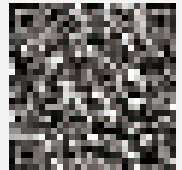


FEATURES

- > Quick release aluminum tripod, good for use with rotary laser levels and dumpy levels.

SPECIFICATION

- > Max Height: 160cm
- > Min Height: 95cm
- > Leg clamp: quick release (clamp)
- > Material: aluminum
- > Thread: 5/8"
- > Tripod Weight: 3.5kg



158D

Dual Lock and Large Head (158mm)



FEATURES

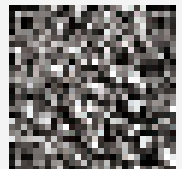
- > Good for all types of lasers, levels and theodolites
- > Economic
- > Dual locking for fast and sturdy setup, with standard survey 5/8" x 11 mounting thread

COMPLETE KIT

- > 1 tripod

SPECIFICATION

- > Max Height: 1.7M
- > Min Height: 1.05M
- > Size of Head: 158mm (outer)
- > Leg Clamp: quick release & clamp (dual locking)
- > Material: aluminium
- > Thread: 5/8"
- > Tripod Weight: approx 4kg



S20

Standard Quick Clamp



FEATURES

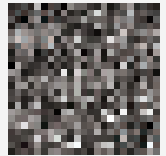
- > This Leica equivalent tripod is made of lacquered, high-quality wood. Suitable for Total Stations, Digital levels, Theodolites, Heavy-duty Rotating Lasers and more.
- > Large tripod head
- > Self adjusting hinge
- > Nylon bushing for easy movement and transport
- > Sturdy clamp with twist screws
- > Excellent damping quality
- > Plumb bob hook

SPECIFICATION

- > Expanded length: 1730MM
- > Retracted length: 1015MM
- > Thread: 5/8 x 11
- > Net weight: approx 5.5kg
- > Gross weight: approx 6.5kg
- > Tripod head: 160mm

COMPLETE KIT

- > 1 tripod



S30

Dual Clamp



FEATURES

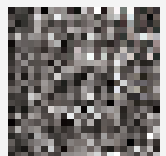
- > This dual clamp lock wood tripod is made of lacquered, high-quality wood. Suitable for Total Stations, Digital levels, GPS, Theodolites, Heavy-duty Rotating Lasers and more.
- > Large tripod head
- > Dual clamp lock
- > Self adjusting hinge
- > Nylon bushing for easy movement and transport
- > Sturdy clamp with twist screws
- > Excellent damping quality
- > Plumb bob hook

SPECIFICATION

- > Expanded length: 1780MM
- > Retracted length: 1015MM
- > Thread: 5/8 x 11
- > Weight: 6.5kg
- > Tripod head: 160mm

COMPLETE KIT

- > 1 tripod, busing and allen key



S680

Sturdy Wood Tripod Expand to 1.83M



FEATURES

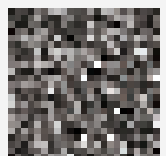
- > This Topcon equivalent tripod is made of lacquered, high-quality wood. Suitable for Total Stations, Digital levels, Theodolites, Heavy-duty Rotating Lasers and more.
- > Large tripod head
- > Self adjusting hinge
- > Nylon bushing
- > Sturdy clamp with twist screws
- > Excellent damping quality

SPECIFICATION

- > Expanded length: 1.83M
- > Retracted length: 1.13M
- > Thread: 5/8 x 11
- > Net weight: approx 6.5kg
- > Gross weight: approx 7.5kg

COMPLETE KIT

- > 1 tripod



MONOPOLE

3M Indoor Ceiling Monopole



FEATURES

- > Ceiling monopole for rotary lasers, line lasers and dot lasers with adjustable height of up to 330cm.
- > Standard 5/8" 11 thread and 1/4" thread insert.
- > Comes with carry bag

COMPLETE KIT

- > Monopole, carry bag

SPECIFICATION

- > Material: Aluminum
- > Max height: 3.3M
- > Sections: 5 sections
- > Weight: 1.8kg



TRIPOD STAR

Tripod Star Floor Spider Support Pad



FEATURES

- > This product is used for using the instrument on surfaces that are not to be marked
- > Can be used on "slippy" surfaces to stabilize and secure setup your tripod and valuable instrument
- > For both indoor and outdoor usage

COMPLETE KIT

- > Tripod star

SPECIFICATION

- > Weight:
- > Size:



TPOLE

3.15M Indoor Telescoping Pole



FEATURES

- > Ceiling tripole for rotary lasers, line lasers and dot lasers with adjustable height of up to 315cm
- > Standard 5/8" 11 thread and 1/4" thread insert
- > Comes with carry bag

COMPLETE KIT

- > Tripole, carry bag

SPECIFICATION

- > Material: Aluminum
- > Max height: 3.15M
- > Sections: 5 sections
- > Weight: 3.2 kg



WALL BRACKET

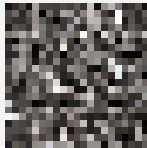
WB01/02/03/04/GJ116

GJ116 1/4 to 5/8 Thread Wall Mount

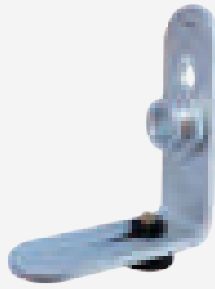


FEATURES

- > 1/4" to 5/8" adapter
- > Magnetic base
- > Load capacity up to 0.8kg



WB02 1/4" to 5/8" Universal Adapter



FEATURES

- > 1/4" to 5/8" adapter
- > Magnetic base
- > Tough metal construction
- > This wall bracket would fit palm laser. Measure from the 1/4" thread of your laser to the end. If the distance is less than 3.5cm, yes, you can use the wall bracket on both position.

SPECIFICATION

- > Material: Aluminum

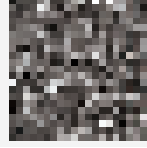


WB03 Wall Mount Bracket



FEATURES

- > Height adjustable laser platform with 5/8x11 male thread
- > In-built back female 5/8x11 thread for tripod mounting
- > 900mm platform (from centre line to back of bracket)
- > Tough durable construction

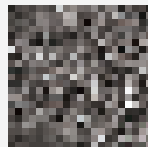


WB01 5/8 11 Thread Universal Wall Mount Bracket

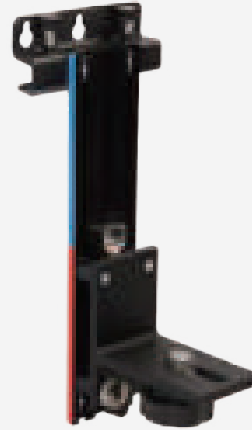


FEATURES

- > 5/8x11 thread
- > Height adjustable laser platform with 5/8x11 male thread
- > Secure clamp for ceiling grid
- > In-built back female 5/8x11 thread for tripod mounting
- > Tough durable construction

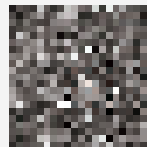


WB04 5/8 11 Thread Universal Wall Mount Bracket



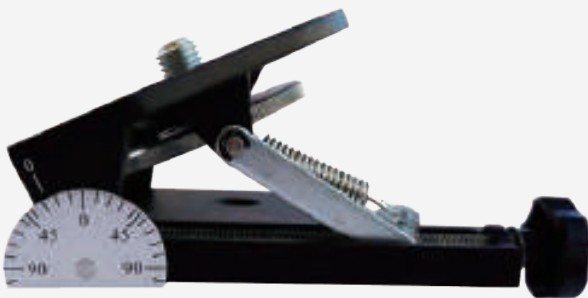
FEATURES

- > This wall mount would fit most lasers levels with a base radius less than 6.5cm in horizontal position.
- > 5/8x11 thread
- > Height adjustable laser platform with 5/8x11 male thread
- > In-built back female 5/8x11 thread for tripod mounting
- > Tough durable construction



LASER GRADE ADAPTER

LDGA 5/8 Thread Universal Laser Grade Adapter



FEATURES

- > 5/8x11 thread
- > Fine adjustment
- > Tough durable construction (approx 0.9kg)



Maxiline

www.lasertoolspecialist.com.au

Features, specifications and descriptions are not binding. All rights reserved. © Sico Australia Pty Ltd 2020.
MAXILINE ACHIEVING AWESOME RESULTS™ is a registered trade mark.